

# Residential Catalogue

v18.0 February 2025



## Introduction

Trusted Solutions: Fletcher Insulation	3
--	---

## National Construction Code

NCC Deemed-to-Satisfy	4
NCC 2019 Deemed-to-Satisfy	5
NCC 2022 Deemed-to-Satisfy	6

## Floor Insulation

Pink® Batts: Floor	7
--------------------	---

## Wall Insulation

Pink® Batts: Wall	8
supaBATT™	9
FirmaSoft® Batts: Wall	10
Fletcher Protect® Party Wall Batts	11
Fletcher Protect® Party Wall Foil Faced Blanket	12

## Sound Insulation

Soundbreak™	13
-------------	----

## Ceiling Insulation

Pink® Batts: Ceiling	14
Perimeter Batts	15
FirmaSoft® Batts: Ceiling	16

## Roofing Blanket

Permastop® Building Blanket	17
Resituff™ Building Blanket	18
Pink® EmberGuard™ Building Blanket	19

## Wall Wrap

Sisalation® Vapawrap® Residential Wall Wrap	20
Sisalation® Tuff Wrap™ Wall Wrap Standard (497)	21
Sisalation® Tuff Wrap™ Wall Wrap Breather (497)	22
Sisalation® Foam Cell Resi Liner	23
Sisalation® Foam Cell Shed Liner	24
Sisalation® Foam Cell Multipurpose	25
Sisalation® Foam Cell Multipurpose LT	26
Sisalation® Bubble Cell	27

## Roof Sarking & Building Membranes

Sisalation® 433/453 Metal Roof	28
Sisalation® Multipurpose EHD (456)	29
Sisalation® Foam Cell Resi Liner	30
Sisalation® Foam Cell Shed Liner	31
Sisalation® Foam Cell Multipurpose	32
Sisalation® Foam Cell Multipurpose LT	33
Sisalation® Vapawrap® Vapour Permeable Metal Roof	34
Sisalation® Bubble Cell	35

## Acoustic Barriers

Pipe Acoustic Lagging	36
Loaded Vinyl Barrier	37

## Tapes & Ancillary

Fire Seal	38
Fire Strip	38
Thermatape™ Thermal Break Strip	38
Vapastop® 883 Reinforced Foil Tape	39
Plain Foil Tape	39
3M Seaming Tape	39

Get in touch with us	41
----------------------	----

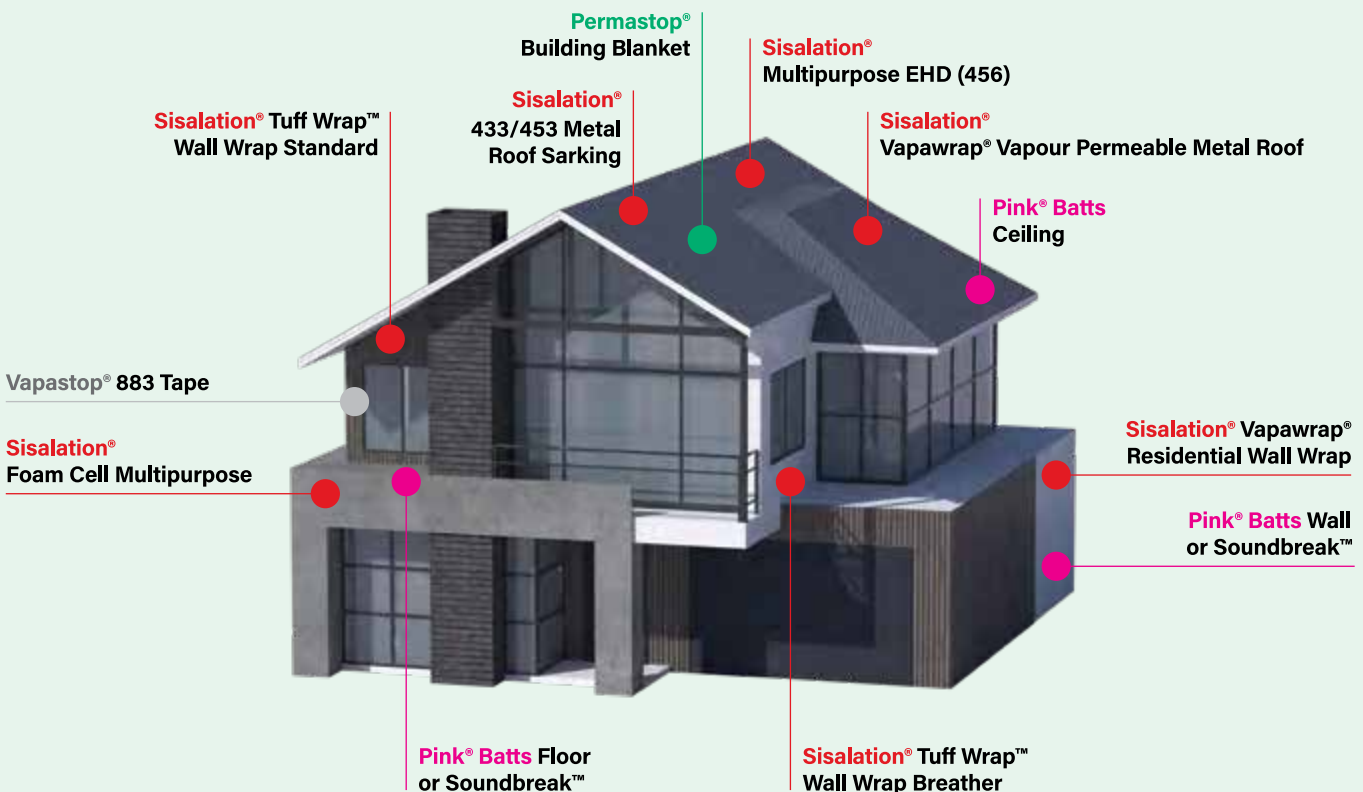
The Fletcher Insulation Residential Catalogue has been designed to be used in conjunction with our product selection guides for understanding best suited product in application as well as our technical data sheet for product performance, standards compliance and specification for best practice methods for installing Fletcher Insulation products. The catalogue is not designed to be used for understanding how product performs in application or technically, rather a comprehensive guide of the range of insulation available at Fletcher Insulation, along with product codes for ease of reference and or selection.

## Trusted Solutions: Fletcher Insulation

With one of Australia's widest distribution and sales coverage networks, Fletcher Insulation® provides energy efficient and acoustic solutions to the residential, commercial, HVAC and industrial markets. We manufacture and distribute a wide range of insulation products specially designed for Australian thermal and acoustic systems.

At the forefront of innovation and development of new trends as well as cost effective and compliant products, we remain committed to offering valuable service to our customers.

Our national sales force has the experience and knowledge to provide assistance for any project or development to meet non-combustibility, acoustic, energy efficiency and condensation management performance requirements.



## The whole-of-home solution that puts you in the pink

Our whole-of-home approach features everything you need to create a more comfortable, energy efficient home. From Pink® Batts for walls, floors and ceilings, to Sisalation® building membranes that go around walls and under roofs, and Permastop® Building Blankets for metal roofs.

Pink® Batts' next generation organic binder produces a glasswool batt that is environmentally responsible, safe to use and rigid, yet soft to handle. Because Pink® Batts are firmer, DIY installation is a breeze and once they are installed, they hold in place, which is important, because a gap of only 5% can result in up to a 20% drop in thermal performance.

Introducing next generation batts, engineered for a fast firm fit.

# National Construction Code

## NCC Deemed-to-Satisfy

Australia has a varied climate, leading to different locations around the country having different heating and cooling requirements. To account for these differences the energy efficiency Deemed-to-Satisfy Provisions vary from location to location and for simplicity, locations with approximately similar climates have been combined into eight climate zones.

The following provides a brief description of each NCC climate zone:

<b>Climate zone 1</b>	High humidity summer, warm winter
<b>Climate zone 2</b>	Warm humid summer, mild winter
<b>Climate zone 3</b>	Hot dry summer, warm winter
<b>Climate zone 4</b>	Hot dry summer, cool winter
<b>Climate zone 5</b>	Warm temperate
<b>Climate zone 6</b>	Mild temperate
<b>Climate zone 7</b>	Cool temperate
<b>Climate zone 8</b>	Alpine

 Zone 1	 Zone 5
 Zone 2	 Zone 6
 Zone 3	 Zone 7
 Zone 4	 Zone 8



# National Construction Code

## NCC 2019 Deemed-to-Satisfy insulation requirements for residential

The following table outlines the insulation requirements under the Deemed-to-Satisfy provisions of the NCC for common residential roof systems. The minimum NCC insulation values recommended below can be used to meet the building performance requirements where the Deemed-to-Satisfy provisions as detailed in section 3.12 of the NCC are also met.

Table 1: Roofs and Ceilings								
Options	Minimum Total R-value for climate zones 1-8							
	For the downward direction of heat flow		For the upward and downward direction of heat flow			For the upward direction of heat flow		
	1	2	3	4	5	6	7	8
i. A roof or ceiling with a roof upper surface solar absorptance value of more than 0.6	5.1	5.1	5.1	5.1	5.1	5.1	5.1	6.3
ii. A roof or ceiling with a roof upper surface solar absorptance value of more than 0.4 but not more than 0.6	4.1	4.6	4.6	4.6	4.6	5.1	5.1	6.3
iii. A roof or ceiling with a roof upper surface solar absorptance value of not more than 0.4	3.1	4.1	4.1	4.1	4.1	4.6	4.6	6.3

Concessions and variations apply. Refer to NCC 2019 Vol.2 Section 3.12.1.2

Table 2: External Walls								
Options	Minimum Total R-value for climate zones 1-8							
	1	2	3	4	5	6	7	8
i. An external wall that is part of an envelope	2.8	2.8	2.8	2.8	2.8	2.8	2.8	3.8

Concessions and variations apply. Refer to NCC 2019 Vol.2 Section 3.12.1.4

Table 3: Floors								
Options	Minimum Total R-value for climate zones 1-8							
	For the upward direction of heat flow				For the downward direction of heat flow			
	1	2	3	4	5	6	7	8
i. A suspended floor without an in-slab heating or cooling system	1.5	1.0	1.5	2.25	1.0	2.25	2.75	3.25

Concessions and variations apply. Refer to NCC 2019 Vol.2 Section 3.12.1.5  
For enclosed perimeter treatment, the underfloor airspace and its enclosure may be included in the Total R-value calculations.



# National Construction Code

## NCC 2022 Deemed-to-Satisfy insulation requirements for residential Class 1 and 10 buildings

The minimum level of thermal performance of new homes is raised to the equivalent of 7 stars under the Nationwide House Energy Rating Scheme (known as NatHERS) in NCC2022 and you can use:

- NatHERS software (Specification 42 of Volume Two (2019: 3.12.0), J2D2(2) and (3) of Volume One (2019: J0.1)) or
- Prescriptive elemental provisions (Section 13 of the ABCB Housing Provisions (2019: Part 3.12), J2D2(2) and (3) of Volume One (2019: J0.1)) such as:

### Minimum roof and ceiling insulation

#### 1. Roof and ceiling insulation must achieve the minimum R-value:

- In climate zone 1, in accordance with Tables 13.2.3a, 13.2.3b, 13.2.3j and 13.2.3k as applicable
- In climate zone 2, in accordance with Tables 13.2.3c and 13.2.3l as applicable; and
- In climate zone 3, in accordance with Tables 13.2.3d and 13.2.3m as applicable; and
- In climate zone 4, in accordance with Tables 13.2.3e and 13.2.3n as applicable; and
- In climate zone 5, in accordance with Tables 13.2.3f and 13.2.3o as applicable; and
- In climate zone 6, in accordance with Tables 13.2.3g and 13.2.3p as applicable; and
- In climate zone 7, in accordance with Tables 13.2.3h and 13.2.3q as applicable; and
- In climate zone 8, in accordance with Tables 13.2.3i and 13.2.3r as applicable.

### Minimum external thermal envelope wall insulation

#### 1. Except for the external wall of a sub-floor space below a suspended floor and lightweight wall construction, wall insulation must have a minimum R-value:

- In climate zone 1, in accordance with Tables 13.2.5a
- In climate zone 2, in accordance with Tables 13.2.5c and 13.2.5d as applicable; and
- In climate zone 3, in accordance with Tables 13.2.5e
- In climate zone 4, in accordance with Tables 13.2.5g and 13.2.5h as applicable; and
- In climate zone 5, in accordance with Tables 13.2.5i and 13.2.5j as applicable; and
- In climate zone 6, in accordance with Tables 13.2.5k and 13.2.5l as applicable; and
- In climate zone 7, in accordance with Tables 13.2.5m and 13.2.5n as applicable; and

#### 2. For lightweight wall construction, wall insulation must have a minimum R-value:

- In climate zone 1, in accordance with Table 13.2.5b; and
- In climate zone 2, in accordance with Table 13.2.5c, with R0.3 added; and
- In climate zone 3, in accordance with Table 13.2.5f; and
- In climate zone 4, in accordance with Table 13.2.5g, with R0.3 added; and
- In climate zone 5, in accordance with Table 13.2.5i, with R0.3 added; and
- In climate zone 6, in accordance with Table 13.2.5k, with R0.3 added; and
- In climate zone 6, in accordance with Table 13.2.5m, with R0.3 added; and
- In climate zone 8, in accordance with Table 13.2.5o.

### Minimum floor insulation

#### 1. Floor insulation, where the floor is over an unenclosed space, must achieve the minimum R-value in accordance with Table 13.2.6a.

#### 2. Floor and subfloor insulation, where the floor is over an unenclosed space, must:

- In climate zone 1, be subfloor wall insulation with an R-value of R1.5; and
- In climate zone 2, be subfloor wall insulation in accordance with Table 13.2.6b; and
- In climate zone 3, be subfloor wall insulation in accordance with Table 13.2.6c; and
- In climate zone 4, in accordance with Table 13.2.6d; and
- In climate zone 5, in accordance with Table 13.2.6e; and
- In climate zone 6, in accordance with Table 13.2.6f; and
- In climate zone 6, in accordance with Table 13.2.6g; and
- In climate zone 8, in accordance with Table 13.2.6h.

As well as other requirements detailed in section 13 of the ABCB Housing Provisions.

# Floor Insulation

## Pink® Batts: Floor



When it comes to managing temperature in your home, Pink® Batts have you covered, from the ground up. Pink® Floor Batts are rigid and pop open to achieve their full thickness, meaning you get the best thermal performance for your home.

**Designed for** use in intra-floor and sub-floor applications in residential construction and is the trusted choice when it comes to constructing new homes or retrofitting existing buildings.

**Made from** a high density, flexible and resilient glasswool that is made from up to 80% recycled materials.

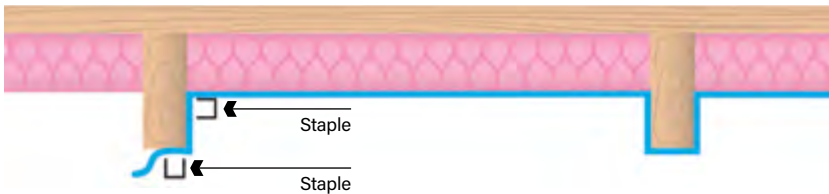
### Product information

- Reduces cold draughts from entering the home through suspended timber floors
- Ease of installation, batts are friction fitted between the joists using a simple retention strap stapled into position
- Comfortable to handle during installation
- Water repellent additive ensures batts resist moisture, helping prevent mould growth

**Product stock and availability:** Please check stock availability with your local Fletcher Insulation representative. Product stock varies and not all products are stocked in every Fletcher Insulation location.

Material R-value	Thickness mm	Width mm	Length mm	m <sup>2</sup> per pack	Coverage per pack m <sup>2</sup>	Batts per pack	Packs per bale	Old product code	New product code
R2.5HD	90	430	1160	5.99	6.64	12	5	900263	4006073

### Install example Timber sub-floor



# Wall Insulation

## Pink® Batts: Wall



**Designed for** thermal insulation of walls in residential building applications. It is the trusted choice when it comes to constructing new homes or retrofitting existing buildings.

**Made from** up to 80% recycled content, lightweight, flexible and resilient.

### Product information

- Lifetime consumer warranty
- Non-combustible in accordance with AS/NZS1530 Part 1
- Recover to their natural thickness, fast
- Batts are friction fitted and will remain in place without slumping for continual thermal performance
- Comfortable to handle during installation
- Safe to use with allergy sufferers due to low VOC

**Product stock and availability:** Please check stock availability with your local Fletcher Insulation representative. Product stock varies and not all products are stocked in every Fletcher Insulation location.

Frame type	Material R-value	Thickness mm	Width mm	Length mm	m <sup>2</sup> per pack	Coverage per pack m <sup>2</sup>	Batts per pack	Packs per bale	Old product code	New product code
Timber	R1.5	70	430	1160	11.97	13.29	24	6	900166	4006277
		70	580	1160	16.15	17.92	24	6	900167	4006278
	R2.0	90	430	1160	11.97	13.29	24	5	901217	4006093
		90	580	1160	16.15	17.92	24	5	901218	4006094
	R2.0HD	70	430	1160	5.99	6.8	12	6	900210	4006279
		70	450	1200	6.4	6.4	12	6	N/a	4021074
		70	580	1160	8.07	8.96	12	6	900211	4006280
		70	600	1200	8.6	8.6	12	6	900213	4006281
	R2.5HD	90	430	1160	5.99	6.64	12	5	900253	4006071*
		90	580	1160	8.07	8.96	12	5	900256	4006072*
	R4.0HD	140	430	1160	2.49	2.80	5	5	N/a	4021220#
		140	580	1160	3.36	3.78	5	5	N/a	4021241#
Steel	R2.0HD	70	600	1200	8.6	8.6	12	6	900213	4006281
	R2.5HD	90	450	1200	6.4	6.4	12	5	N/a	4020595*
		90	600	1200	8.6	8.6	12	5	900214	4006069*
WA Only	R2.5HD	90	430	1160	6.98	7.85	14	5	N/a	4020917^
		90	580	1160	9.41	10.58	14	5	N/a	4020918^
		90	580	1160	8.74	9.83	13	5	N/a	4021149^

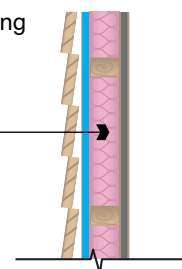
\* These products may not be available in WA. Please contact Fletcher Insulation for confirmation.

^ These product codes are only available in WA and do not have Codemark certification. Refer to codes above for all other states.

# Awaiting Codemark

### System example Lightweight cladding

Fits and holds in place for maximum thermal and acoustic performance





# Wall Insulation

## supaBATT™



**Designed for** improving the thermal efficiency of the external wall of a residential building, to help deliver 7 Star NCC compliance, specifically under NCC2022. There is an option which is faced with class 4 vapour permeable membrane to assist in condensation management of external walls.

**Made from** up to 80% recycled content that is high in density, lightweight and resilient.

### Product information

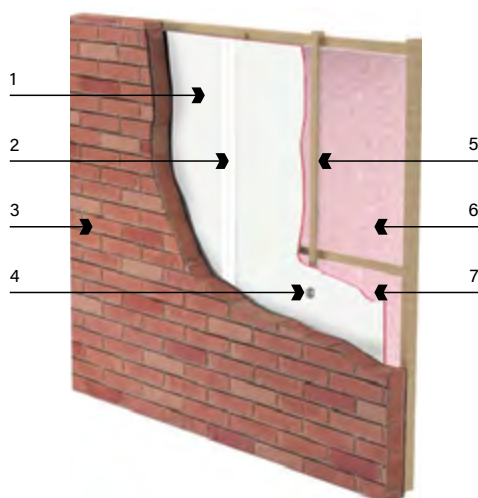
- Firm to fit 1200mm wide boards make installation easy over existing framework
- Will provide an additional R-value of 0.4 to external walls of a structure
- Australian made using up to 80% recycled content, suitable for Australian housing conditions
- Faced with a class 4 vapour permeable membrane, providing a 2-in-1 time saving solution as there is no need to wrap a house separately with vapour permeable membrane.

**Product stock and availability:** Please check stock availability with your local Fletcher Insulation representative. Product stock varies and not all products are stocked in every Fletcher Insulation location.

Vapour class	Material R-value	Thickness mm	Width mm	Length mm	m <sup>2</sup> per pack	Coverage per pack m <sup>2</sup>	Batts per pack	Packs per pallet	Product code
VP4	R0.4	15	1200	2400	57.6	57.6	20	6	4020912
-	R0.4	15	1200	2400	57.6	57.6	20	6	4020908

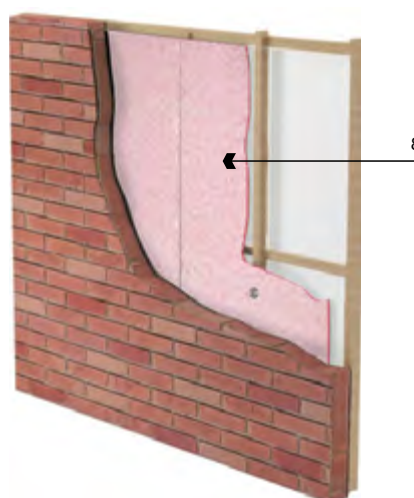
For further information on the VP4 please refer to the Sisalation® Vapawrap® Residential Wall Wrap Technical Data Sheet.

### Install example: Faced

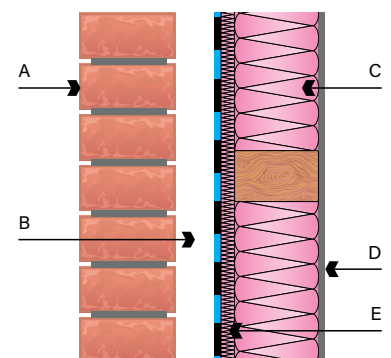


1. Faced supaBATT™
2. Join, taped
3. External brick wall
4. Mechanical fastener
5. Timber stud
6. Plasterboard lining fixed to stud
7. Unfaced supaBATT

### Install example: Unfaced



### System example



- A. Brick veneer
- B. Unventilated air space
- C. Pink® Soundbreak R2.7 90mm
- D. Plasterboard
- E. supaBATT VP4

# Wall Insulation

## FirmaSoft® Batts: Wall



**Designed for** thermal insulation of walls in residential building applications. It is the trusted choice when it comes to constructing new homes or retrofitting existing buildings.

**Made from** up to 80% recycled glasswool that is lightweight, flexible and resilient.

### Product information

- Lifetime consumer warranty
- Non-combustible in accordance with AS/NZS1530 Part 1
- Recover to their natural thickness, fast
- Batts are friction fitted and will remain in place without slumping for continual thermal performance
- Comfortable to handle during installation
- Safe to use with allergy sufferers due to low VOC

**Product stock and availability:** Please check stock availability with your local Fletcher Insulation representative. Product stock varies and not all products are stocked in every Fletcher Insulation location.

Material R-value	Thickness mm	Width mm	Length mm	m <sup>2</sup> per pack	Coverage per pack m <sup>2</sup>	Batts per pack	Packs per bale	Old product code	New product code
R1.5	70	430	1160	11.0	12.4	22	6	900281	4006076
	70	580	1160	14.8	16.9	22	6	900280	4006075
R2.0	90	430	1160	11.0	12.4	22	5	900282	4006077
	90	580	1160	12.1	13.8	18	6	900283	4006078
R2.5HD	90	430	1160	6.0	6.8	12	5	900292	4006085
	90	580	1160	8.1	9.1	12	5	900293	4006086

# Wall Insulation

## Fletcher Protect® Party Wall Batts



**Designed for** fire rated building elements, such as party or separating walls between adjacent tenancies in Class 1 buildings. Provides protection from the spread of fire and also offers acoustic benefits of reducing flanking noise between adjoining properties.

**Made from** non-combustible stone wool.

### Product information

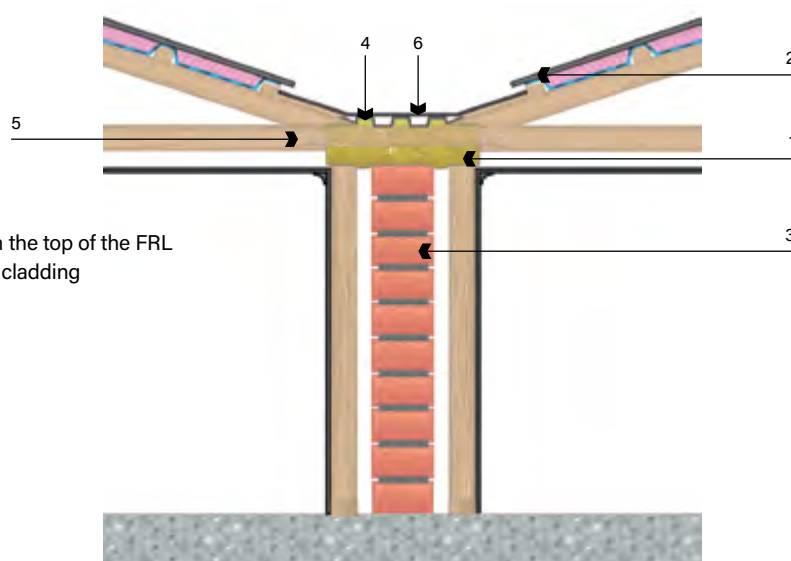
- Non-combustible in accordance with AS/NZS 1530 Part 1
- Easy to cut and install into tight spaces
- Provide excellent resistance to shrinkage at high temperatures
- Acoustic properties reduce flanking noise between properties
- Bio-soluble stone wool

**Product stock and availability:** Please check stock availability with your local Fletcher Insulation representative. Product stock varies and not all products are stocked in every Fletcher Insulation location.

Thickness mm	Width mm	Length mm	Density kg/m <sup>3</sup>	Pieces per pack	Old product code	New product code
50	300mm x 2	1200	40	8	938020	4010579
100	168	1200	60	10	N/a	4021102

### Install example

Typical party wall and common wall application



1. Party Wall Batts are compressed in place from the top of the FRL wall to the underside of non-combustible roof cladding
2. Non-combustible roof cladding
3. FRL rated wall
4. Metal deck (Spandek) box gutter support
5. Compliant roof batten to support metal deck
6. Metal box gutter

See page 37 for accessories.

# Wall Insulation

## Fletcher Protect® Party Wall Foil Faced Blanket



**Designed for** fire rated building elements, such as party or separating walls between adjacent tenancies in Class 1 buildings. Provides protection from the spread of fire and also offers acoustic benefits of reducing flanking noise between adjoining properties.

**Made from** non-combustible stone wool

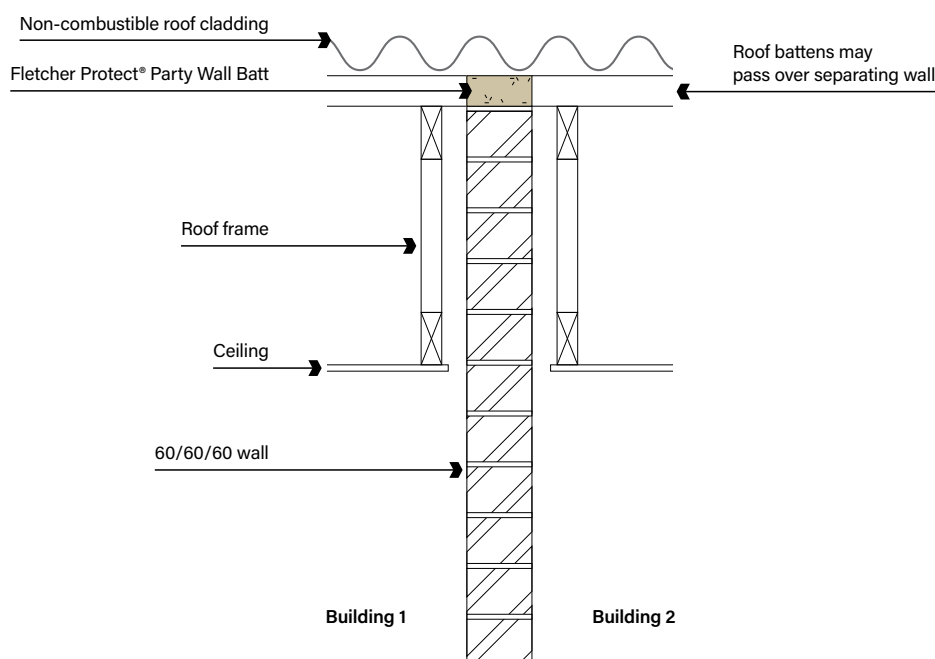
### Product information

- 60kg/m<sup>3</sup> density
- Non-combustible in accordance with AS/NZS 1530 part 1
- Bio soluble stone wool
- Acoustic properties reduce flanking noise between properties
- Provides excellent resistance to shrinkage at high temperatures
- Foil faced for easy handling, cutting and installation

**Product stock and availability:** Please check stock availability with your local Fletcher Insulation representative. Product stock varies and not all products are stocked in every Fletcher Insulation location.

Thickness mm	Width mm	Length m	Pieces per pack	Product code
50	300	5	4	4021101

### Install example



# Sound Insulation

## Soundbreak™



**Designed for** use as superior acoustic control in residential wall, ceiling and intra-floor applications. It is the premium choice when it comes to constructing new homes or retrofitting existing buildings with high performance thermal and acoustic efficiency in mind.

**Made from** up to 80% recycled content that is high in density, lightweight, flexible and resilient.

### Product information

- Soundbreak™ includes all the features and benefits of our Pink® Batts range plus the extra thermal benefit and superior acoustic performance
- Lifetime consumer warranty
- Reduces sound transfer from the external environment into your home or between adjacent rooms
- Ideal sound absorption for theatre rooms, bathrooms and other noisy living areas
- Designed for improved all year round home comfort reducing energy consumption for additional savings
- Comfortable to handle during installation
- Safe to use with allergy sufferers due to low VOC

**Product stock and availability:** Please check stock availability with your local Fletcher Insulation representative. Product stock varies and not all products are stocked in every Fletcher Insulation location.

Material R-value	Thickness mm	Width mm	Length mm	m <sup>2</sup> per pack	Coverage per pack m <sup>2</sup>	Batts per pack	Packs per bale	Old product code	New product code
R1.7	60	430	1160	5.99	6.9	12	5	902291	4010564
	60	580	1160	8.07	9.1	12	5	902292	4010565
R2.0	70	430	1160	4.99	5.6	10	5	902293	4010566
	70	580	1160	6.73	7.6	10	5	902294	4010567
R2.5	90	430	1160	3.99	4.5	8	5	902296	4010568
	90	580	1160	5.38	6.1	8	5	902297	4010569
R2.7	90	430	1160	3.99	4.5	8	5	902298	4010570
	90	580	1160	5.38	6.1	8	5	902299	4010571
	90	600	1200	5.76	5.8	8	5	902300	4010572
R3.1	110	430	1160	2.99	3.4	6	5	902301	4010573
	110	580	1160	4.04	4.5	6	5	902302	4010574



# Ceiling Insulation

## Pink® Batts: Ceiling



**Designed for** thermal insulation of ceilings in residential building applications. It is the trusted choice when it comes to constructing new homes or retrofitting existing buildings.

**Made from** up to 80% recycled materials.

### Product information

- Lifetime consumer warranty
- Non-combustible in accordance with AS/NZS 1530 Part 1
- Recover to their natural thickness, fast
- Batts are friction fitted and will remain in place without slumping for continual thermal performance
- Comfortable to handle during installation
- Safe to use with allergy sufferers due to low VOC

**Product stock and availability:** Please check stock availability with your local Fletcher Insulation representative. Product stock varies and not all products are stocked in every Fletcher Insulation location.

Frame type	Material R-value	Thickness mm	Width mm	Length mm	m <sup>2</sup> per pack	Coverage per pack m <sup>2</sup>	Batts per pack	Packs per bale	Old product code	New product code
Timber	R2.5	130	430	1160	7.98	8.86	16	6	901254	4006098
		130	580	1160	10.76	11.95	16	6	901255	4006099
	R3.0	155	430	1160	7.98	8.86	16	5	901304	4006100
		155	580	1160	10.76	11.95	16	5	901305	4006101
	R3.5	175	430	1160	7.98	8.86	16	4	901354	4006102
		175	580	1160	6.73	7.47	10	6	901355	4006103
	R4.1	215	430	1160	4.99	5.61	10	5	901414	4006039*
		215	580	1160	6.73	7.47	10	6	901415	4006040*
	R5.0	220	430	1160	3.99	4.43	8	5	901504	4006041
		220	580	1160	5.38	5.97	8	5	901505	4006042
	R6.0	250	430	1160	2.99	3.32	6	5	901604	4006043
		250	580	1160	4.04	4.48	6	5	901605	4006044
	R7.0	285	430	1160	2.0	2.24	4	5	901704	4006045
		285	580	1160	2.69	3.03	4	5	901705	4006046
Steel	R4.1	215	450	1200	5.4	5.4	10	3	N/a	4020596*
		215	600	1200	7.2	7.2	10	6	N/a	4020597*
	R5.0	220	450	1200	4.0	4.0	8	5	N/a	4020598
		220	600	1200	5.4	5.4	8	5	N/a	4020599
WA Only	R4.1	195	430	1160	7.48	8.41	15	5	N/a	4020917^
		195	580	1160	10.09	11.35	15	5	N/a	4020919^
		195	580	1160	8.74	9.83	13	5	N/a	4021173^

\* These products may not be available in WA. Please contact Fletcher Insulation for confirmation.

^ These product codes are only available in WA and **do not have Codemark certification**. Refer to codes above for all other states.

# Ceiling Insulation

## Perimeter Batts



**Designed for** thermal insulation of ceilings in residential buildings, at the perimeter of the roof where the ceiling meets the eaves.

**Made from** up to 80% recycled materials.

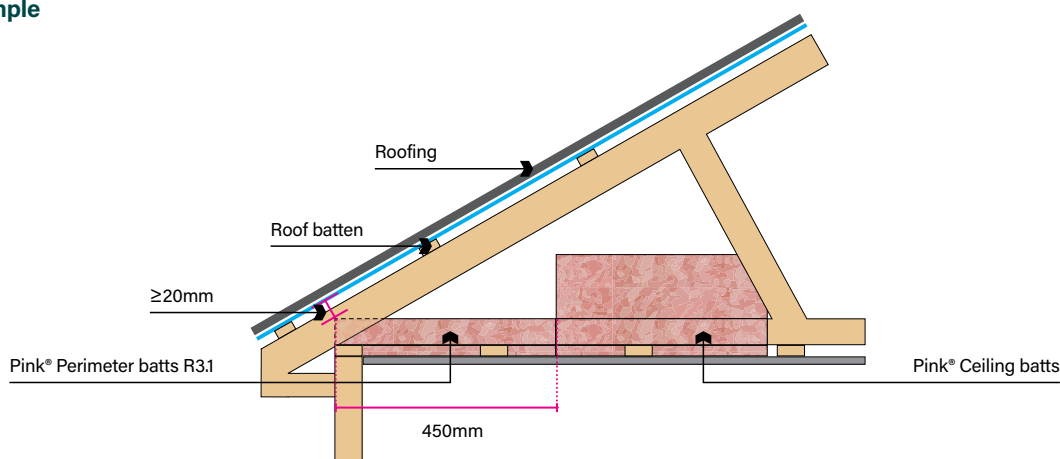
### Product information

- Provides excellent thermal insulation properties, keeping homes cooler in summer and warmer in winter
- Improves the energy efficiency of a home to deliver energy cost savings
- Easy to handle and firm to fit ensuring products remain in place for ongoing thermal performance
- FBS-1 Glasswool Bio-Soluble Insulation® – safe to use
- Non-combustible
- Manufactured from up to 80% recycled content
- Made by Fletcher Insulation in Australia using innovative glasswool manufacturing technology
- Backed by a Consumer Lifetime Warranty

**Product stock and availability:** Please check stock availability with your local Fletcher Insulation representative. Product stock varies and not all products are stocked in every Fletcher Insulation location.

Material R-value	Thickness mm	Width mm	Length mm	m <sup>2</sup> per pack	Coverage per pack m <sup>2</sup>	Batts per pack	Packs per bale	New product code
R3.1	110	450	1200	3.24	3.64	6	4	4020593
	110	450	1160	3.13	3.52	6	6	4020594

### Install example



# Ceiling Insulation

## FirmaSoft® Batts: Ceiling



**Designed for** thermal insulation of ceilings in residential building applications. It is the trusted choice when it comes to constructing new homes or retrofitting existing buildings.

**Made from** up to 80% recycled glasswool that is lightweight, flexible and resilient.

### Product information

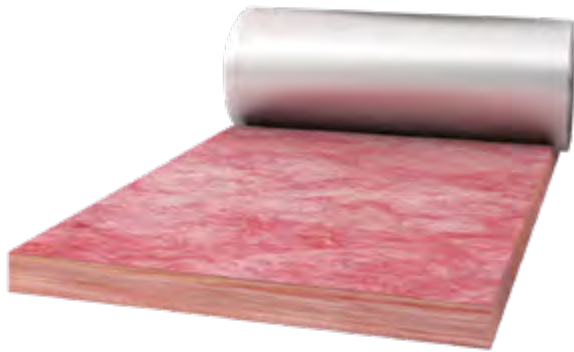
- Lifetime consumer warranty
- Non-combustible in accordance with AS/NZS 1530 Part 1
- Recover to their natural thickness, fast
- Batts are friction fitted and will remain in place without slumping for continual thermal performance
- Comfortable to handle during installation
- Safe to use with allergy sufferers due to low VOC

**Product stock and availability:** Please check stock availability with your local Fletcher Insulation representative. Product stock varies and not all products are stocked in every Fletcher Insulation location.

Material R-value	Thickness mm	Width mm	Length mm	m <sup>2</sup> per pack	Coverage per pack m <sup>2</sup>	Batts per pack	Packs per bale	Old product code	New product code
R3.5	175	430	1160	8.0	9.0	16	4	900286	4006079
	175	580	1160	6.7	7.7	10	6	900287	4006080
R4.1	215	430	1160	5.0	5.6	10	5	900288	4006081
	215	580	1160	6.7	7.7	10	6	900289	4006082
R5.0	220	430	1160	4.0	4.5	8	5	900290	4006083
	220	580	1160	5.4	6.1	8	5	900291	4006084
R6.0	250	430	1160	3.0	3.4	6	5	N/a	4020903
	250	580	1160	4.0	4.5	6	5	N/a	4020892

# Roofing Blanket

## Permastop® Building Blanket



**Designed for** use in residential and commercial metal clad roof and wall applications to provide thermal, acoustic and condensation control to the building.

**Made from** Pink® building blanket (up to 80% recycled content) faced with Sisalation® reflective facing foil (available in Light, Medium and Heavy Duty) adhered to one side.

### Product information

- Cut-to-length available. Please check lead times in your location
- Combines two effective types of insulation, Pink® Building Blanket and Sisalation® Facing Foil, to offer one single product solution
- Aids in minimising the risk of condensation
- Reduces sound transfer from the external environment (i.e. rain and overhead traffic) into the building
- Year round comfort, increasing overall energy efficiency to a building
- Faced with industry leading Sisalation® reflective foil laminate in your choice of Light, Medium or Heavy Duty strength

**Product stock and availability:** Please check stock availability with your local Fletcher Insulation representative. Product stock varies and not all products are stocked in every Fletcher Insulation location.

Facing	Material R-value	Thickness mm	Width mm	Length mm	m <sup>2</sup> per roll	Old product code	New product code
Sisalation® Light Duty (LD) 150mm Overlap	R1.3	55	1200	15	18	912150	4020480
	R1.3	55	1200	20	24	912200	4020481
	R1.4	60	1200	15	18	910150	4020484
	R1.4	60	1200	20	24	910200	4020485
	R1.8	75	1200	15	18	913150	4020482
	R2.5	100	1200	10	12	914100	4020472
	R3.0	130	1200	10	12	930100	4020473
	R3.2	130	1200	10	12	930101	4020475
Sisalation® Medium Duty (MD) 150mm Overlap	R3.6	130	1200	6.5	7.8	930368	4020477
	R1.3	55	1200	15	18	917150	4005793
	R1.4	60	1200	15	18	910151	4004325
	R1.8	75	1200	15	18	918150	4005712
	R2.5	100	1200	10	12	919100	4005719
	R3.0	130	1200	10	12	931100	4005631
	R3.2	130	1200	10	12	930201	4005622
	R3.6	130	1200	6.5	7.8	930362	4005626
Sisalation® Heavy Duty (HD) 150mm Overlap	R1.3	55	1200	15	18	927150	4005614
	R1.8	75	1200	15	18	928150	4005616
	R2.5	100	1200	10	12	929100	4005619

# Roofing Blanket

## Resituff™ Building Blanket



**Designed for** use in residential metal clad roof insulation applications to provide thermal, acoustic and condensation control to the building.

**Made from** Pink® Building Blanket (up to 80% recycled content) faced with Sisalation® Light Duty, polyweave laminate. The reflective foil laminate features a 150mm overlap along the left hand side edge.

### Product information

- Combines two effective types of insulation to provide one product solution
- Reduces the risk of condensation forming under metal roofing
- Offers both thermal and acoustic properties
- Reduces sound transfer from the external environment into the building, such as rain on the roof
- Provides all year round comfort and contributes to increased energy efficiency of a building
- Faced with industry leading Sisalation® reflective polyweave foil in a Light Duty density

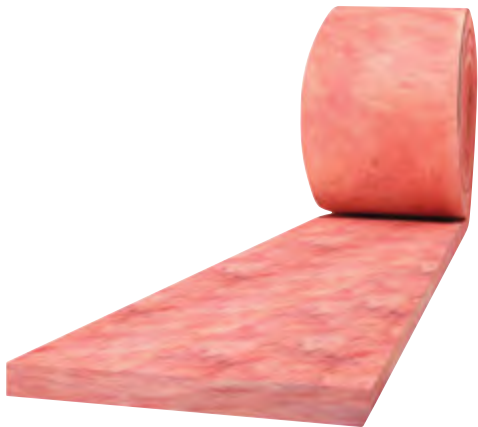
**Product stock and availability:** Please check stock availability with your local Fletcher Insulation representative. Product stock varies and not all products are stocked in every Fletcher Insulation location.

Facing	Material R-value	Thickness mm	Width mm	Length m	m <sup>2</sup> per roll	New product code
Sisalation® Multipurpose LD (431) 150mm lap	R1.3	55	1200	15	18	4020341
		55	1200	20	24	4020342
	R1.4	60	1200	15	18	4020343
		60	1200	20	24	4020344
	R1.8	75	1200	15	18	4020345



# Roofing Blanket

## Pink® EmberGuard™ Building Blanket



**Designed for** use under metal roofing in residential constructions. Compress blanket to seal gaps under the corrugations or ribs and between roof components in accordance with the bushfire construction requirements of AS 3959–2018. It is recommended to be installed in conjunction with Sisalation® Multipurpose EHD or Sisalation® Metal Roof.

**Made from** up to 80% recycled content that is lightweight, flexible and resilient.

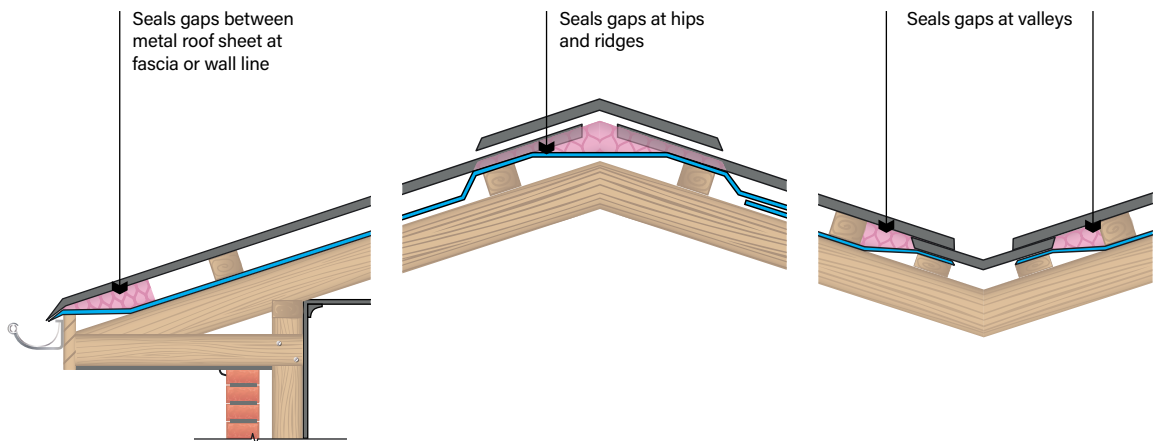
### Product information

- 10 year product warranty
- Non-combustible in accordance with AS 1530.1–1994 reducing fire risk
- For use in bushfire prone areas with a Bushfire Attack Level (BAL) of 12.5–40 (Ember Attack)
- Cost effective regulatory compliant solution providing peace of mind against ember attack

**Product stock and availability:** Please check stock availability with your local Fletcher Insulation representative. Product stock varies and not all products are stocked in every Fletcher Insulation location.

Thickness mm	Width mm	Length m	Rolls per pack	Lineal m <sup>2</sup> per pack	Old product code	New product code
25	300	20	4	80	910242	4005985

### Install example



# Wall Wrap

## Sisalation® Vapawrap® Residential Wall Wrap



**Designed for** use in cooler climates where a vapour permeable membrane is required to allow for vapour transfer but also act as a water barrier for condensation management.

Provides protection against damaging winds and heavy rain which can penetrate through exterior cladding and roofing material. Sisalation® Vapawrap® Residential Wall Wrap will keep water out, allowing moisture vapour inside the structure to escape.

**Made from** a water resistant non-woven fabric.

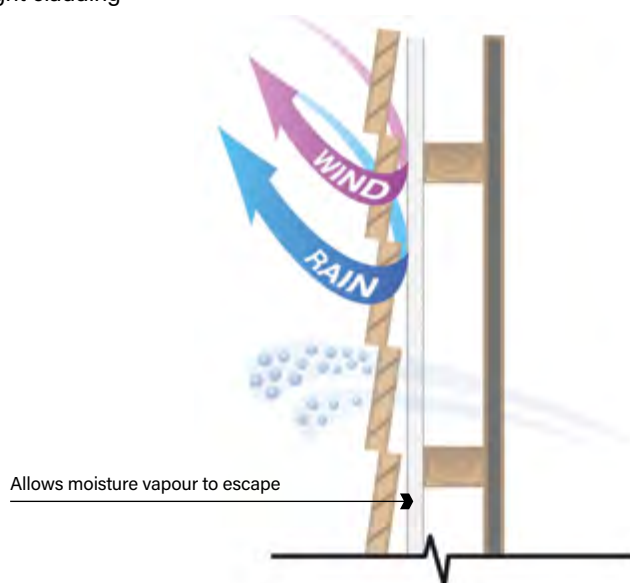
### Product information

- Allows water vapour to escape from buildings through walls, reducing the potential of condensation and mould growth
- Can be exposed to UV for up to 8 weeks, allowing internal building work to commence before external cladding is installed
- Meets flammability requirement of  $\leq 5$ , as per AS/NZ 1530.2 and suitable for use in bush fire areas with BAL (Bushfire Attack Level) of Low -FZ
- Use with 3M Seaming Tape (4006809) to ensure all wall wrap joints are sealed

**Product stock and availability:** Please check stock availability with your local Fletcher Insulation representative. Product stock varies and not all products are stocked in every Fletcher Insulation location.

Width mm	Length mm	m <sup>2</sup> per roll	Roll weight kg	Old product code	New product code
1350	30	40.5	4.7	256253	4006867
1500	30	45	5.2	256290	4006878
2700	30	81	8.7	395272	4006746

**Install example** Lightweight cladding



# Wall Wrap

## Sisalation® Tuff Wrap™ Wall Wrap Standard (497)



**Designed for** protecting a home against damaging wind and rain, that can penetrate external cladding.

**Made from** high density polyethelene fibres that are fused together to form a strong, uniform web.

### Product information

- Designed to protect buildings by reflecting 95% of radiant heat
- Exceptional strength to weather and tearing during construction
- Low flammability  $\leq 5$ , as per AS/NZ 1530.2
- Use with Vapastop® 883 Reinforced Foil Tape, for secure joins (refer page 34)

**Product stock and availability:** Please check stock availability with your local Fletcher Insulation representative. Product stock varies and not all products are stocked in every Fletcher Insulation location.

Width mm	Length m	m <sup>2</sup> per roll	Roll weight kg	Old product code	New product code
1350	30	40.5	4.7	255088	4006915
1350	60	81	7	255092	4006917

### Install example



# Wall Wrap

## Sisalation® Tuff Wrap™ Wall Wrap Breather (497)



**Designed for** use as a wall wrap building membrane where a degree of permeability is required in the wall.

**Made from** reflective foil with blue anti-glare coating on one side for ease of installation.

### Product information

- Designed to protect buildings by reflecting 95% of radiant heat
- Incorporates an anti-glare coating on one side for added installation safety
- Class 3 Vapour Permeable allows water vapour to pass through and allow for drying and assist in prevention of mould and mildew
- Exceptional strength to weather and tearing during construction
- Use with Vapastop® 883 Reinforced Foil Tape, for secure joins (refer page 34)

**Product stock and availability:** Please check stock availability with your local Fletcher Insulation representative. Product stock varies and not all products are stocked in every Fletcher Insulation location.

It is important that the cladding manufacturer's requirements are referred to when determining the suitability of Sisalation® Tuff Wrap™ Wall Wrap Breather (497).

Width mm	Length m	m <sup>2</sup> per roll	Roll weight kg	Old product code	New product code
1350	30	40.5	4.7	255089	4006916
1350	60	81	7	255087	4006914

# Wall Wrap

## Sisalation® Foam Cell Resi Liner



**Designed for** use as a reflective foil and vapour barrier for residential stud walls, double brick cavities and tile and metal roof constructions for added insulative properties.

**Made from** a closed cell, cross-linked XPE foam core encapsulated between two layers of low emissivity facing foil, one side with an anti-glare coating.

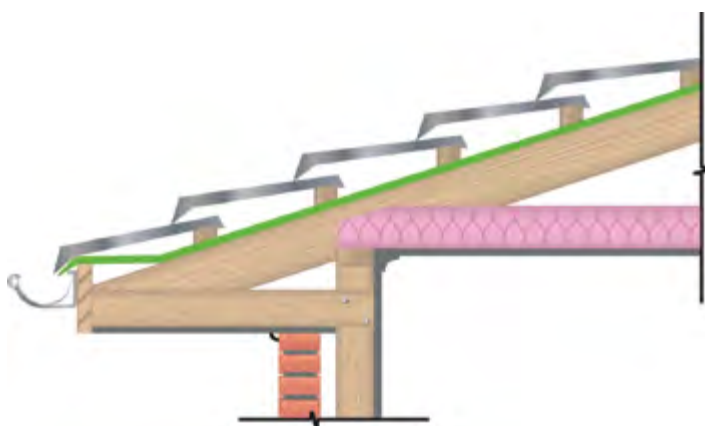
### Product information

- 10 year product warranty
- Includes a 150mm foil flap to maximise coverage and minimise taping
- Satisfies Bushfire Attack Level (BAL) requirements of Low-40 in roof applications and Low-FZ in wall applications (in accordance with AS 3959-2018)
- Advanced thermal performance reflecting up to 95% radiant heat, allowing for cooler internal conditions in hot and humid climates
- Incorporates an anti-glare coating on one side for added install safety
- Aids in the prevention of condensation
- Effective water and vapour barrier
- Maximum durability and increased tear resistance
- Allows for easy and rapid installation
- Use with Vapastop® 883 Reinforced Foil Tape, for secure joins (refer page 34)

**Product stock and availability:** Please check stock availability with your local Fletcher Insulation representative. Product stock varies and not all products are stocked in every Fletcher Insulation location.

Width mm	Overlap mm	Length m	m <sup>2</sup> per roll	Old product code	New product code
1350	150	22.25	30	395266	4006743

### System example





## Sisalation® Foam Cell Shed Liner



**Designed for** use in wall and roof applications in non-habitable sheds and garages.

**Made from** a cross linked, closed cell foam core laminated between layers of reflective foil, with an anti-glare costing on one layer for installation safety.

### Product information

- Includes a 150mm foil overlap to maximise coverage and minimise taping
- Effective water and vapour barrier
- Reflects up to 95% of the sun's radiant heat, allowing for cooler conditions in hot and humid climates
- Incorporates an anti-glare coating on one side for added installation safety
- Assists to minimise condensation

**Product stock and availability:** Please check stock availability with your local Fletcher Insulation representative. Product stock varies and not all products are stocked in every Fletcher Insulation location.

Width mm	Overlap mm	Length m	m <sup>2</sup> per roll	Old product code	New product code
1350	150	22.25	30	395262	4006741
1350	150	33.44	45	395269	4006744

# Wall Wrap

## Sisalation® Foam Cell Multipurpose

GROUP 2  
RATING



**Designed for** use as a 3-in-1 multipurpose insulation, vapour barrier and thermal break solution for steel framed residential wall and roof construction, to reduce the thermal bridging and conductivity between building elements. It is commonly also used in timber framed roof construction for added insulative properties.

Sisalation® Foam Cell Multipurpose has a Group 2 fire hazard property rating.

**Made from** a closed cell, cross-linked XPE foam core encapsulated between two layers of low emissivity reflective laminate, one side with an anti-glare coating.

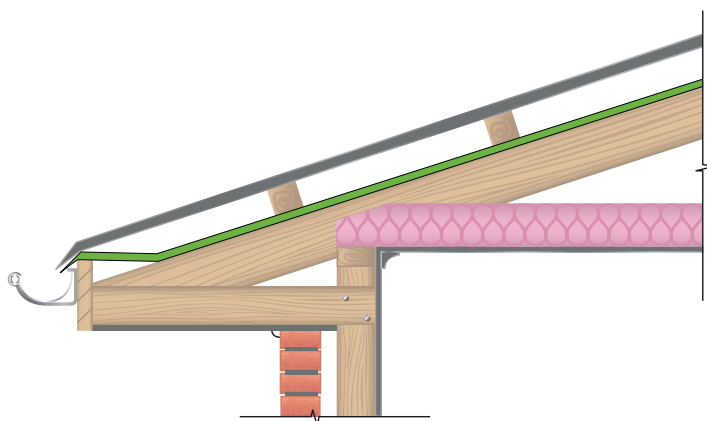
### Product information

- 10 year product warranty
- Suitable for use as a thermal break for steel framed constructions in accordance with NCC requirements
- Includes a 150mm foil flap to maximise coverage and minimise taping
- Satisfies Bushfire Attack Level (BAL) requirements of Low-40 in roof applications and Low-FZ in wall applications (in accordance with AS 3959-2018)
- Advanced thermal performance reflecting up to 95% radiant heat, allowing for cooler internal conditions in hot and humid climates
- Incorporates an anti-glare coating on one side for added installation safety
- Aids in the prevention of condensation
- Maximum durability and increased tear resistance
- Allows for easy and rapid installation
- Use with Vapastop® 883 Reinforced Foil Tape, for secure joins (refer page 34)

**Product stock and availability:** Please check stock availability with your local Fletcher Insulation representative. Product stock varies and not all products are stocked in every Fletcher Insulation location.

Material R-Value	Thickness mm	Width mm	Overlap mm	Length m	m <sup>2</sup> per roll	Old product code	New product code
R0.25	8.4	1350	150	22.25	30	395264	4006742

### System example



## Sisalation® Foam Cell Multipurpose LT



**Designed for** use as a 3-in-1 multipurpose insulation, vapour barrier and thermal break solution for steel framed residential wall and roof construction, to reduce the thermal bridging and conductivity between building elements. It is commonly also used in timber framed roof construction for added insulative properties.

Sisalation® Foam Cell Multipurpose LT can be used where a fire rated Group number is not essential.

**Made from** a closed cell, cross-linked XPE foam core encapsulated between two layers of low emissivity reflective laminate, one side with an anti-glare coating.

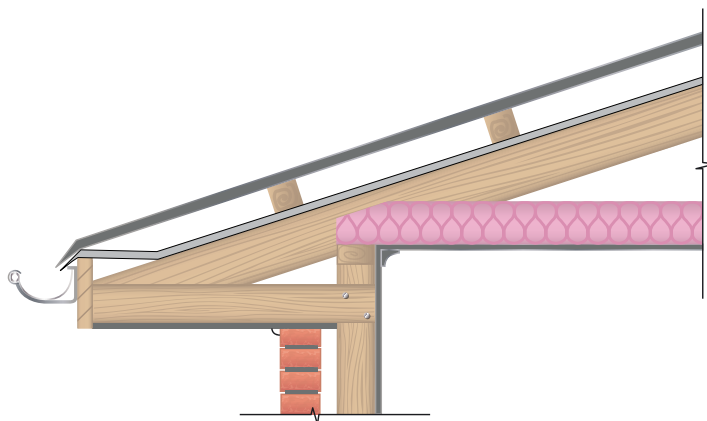
### Product information

- 10 year product warranty
- Suitable for use as a thermal break for steel framed constructions in accordance with NCC requirements
- Includes a 150mm foil flap to maximise coverage and minimise taping
- Satisfies Bushfire Attack Level (BAL) requirements of Low-40 in roof applications and Low-FZ in wall applications (in accordance with AS 3959-2018)
- Advanced thermal performance reflecting up to 95% radiant heat, allowing for cooler internal conditions in hot and humid climates
- Incorporates an anti-glare coating on one side for added installation safety
- Aids in the prevention of condensation
- Maximum durability and increased tear resistance
- Allows for easy and rapid installation
- Use with Vapastop® 883 Reinforced Foil Tape, for secure joins (refer page 34)

**Product stock and availability:** Please check stock availability with your local Fletcher Insulation representative. Product stock varies and not all products are stocked in every Fletcher Insulation location.

Material R-Value	Thickness mm	Width mm	Overlap mm	Length m	m <sup>2</sup> per roll	Old product code	New product code
R0.2	8.4	1350	150	22.25	30	395273	4006747

### System example



# Wall Wrap

## Sisalation® Bubble Cell



**Designed for** use as a sarking material for residential stud walls and double brick cavities, as well as for tile and metal roof constructions.

**Made from** a closed cell bubble core encapsulated between an upper and lower layer of reflective foil laminate, one side with an anti-glare coating.

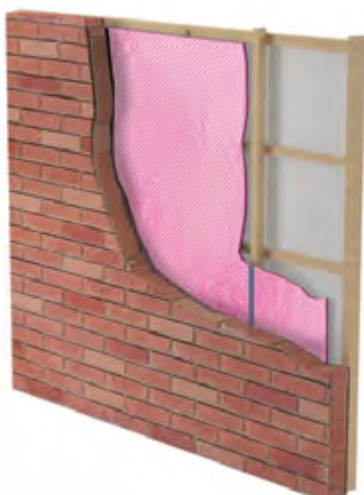
### Product information

- Reflects up to 95% of the sun's radiant heat
- Aids in the prevention of condensation
- Increased tear resistance and durability
- Easy and quick to install
- Has an anti-glare coating on one side for added safety during installation
- May be used in walls with a Bush Fire Attack level of Low-FZ, in accordance with AS 3959:2018
- Use with Vapastop® 883 Reinforced Foil Tape, for secure joins (refer page 34)

**Product stock and availability:** Please check stock availability with your local Fletcher Insulation representative. Product stock varies and not all products are stocked in every Fletcher Insulation location.

Material R-Value	Thickness mm	Width mm	Overlap mm	Length m	m <sup>2</sup> per roll	Old product code	New product code
R0.1	4	1350	22.25	30	14	395215	4006740

### System example



# Roof Sarking & Building Membranes

## Sisalation® 433/453 Metal Roof



**Designed for** use as a sarking in residential and commercial metal roof construction.

**Made from** double sided reflective aluminum foil one side with an anti-glare coating, double layered high density kraft paper. The HD option is reinforced by yarn.

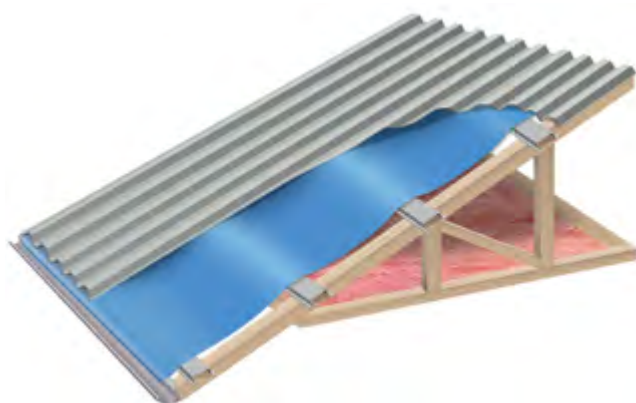
### Product information

- 10 year product warranty
- Strong, tear and scratch resistant
- Protects buildings against radiant heat
- The foil-paper composition can help to reduce the risk of noise generated in metal roofs (otherwise known as 'noisy roof syndrome')
- Incorporates an anti-glare coating on one side for added installation safety
- Minimises draughts, thereby allowing bulk wall insulation to perform more effectively
- Suitable for use in bushfire areas with a Bushfire Attack Level (BAL) of Low-40 in accordance with AS 3959:2018
- Use with Vapastop® 883 Reinforced Foil Tape, for secure joins (refer page 34)

**Product stock and availability:** Please check stock availability with your local Fletcher Insulation representative. Product stock varies and not all products are stocked in every Fletcher Insulation location.

Product	Width mm	Length m	m <sup>2</sup> per roll	Roll weight kg	Old product code	New product code
Sisalation® Metal Roof MD (433)	1350	30	40.5	6.35	951282	4005546
	1350	60	81	12.40	951260	4005545
Sisalation® Metal Roof HD (453)	1350	60	81	14.02	952260	4005429

**Install example** Metal roof with metal battens





# Roof Sarking & Building Membranes

## Sisalation® Multipurpose EHD (456)



**Designed for** use as a pliable building membrane in applications such as brick veneer walls, tile roofs (with the exception of slate) and metal roofs. Sisalation® Multipurpose products are specifically designed for external wall applications in climate zones 1–3 and in suitable roofing applications in all climate zones.

**Made from** a layer of aluminium foil bonded to a polymer-based weave.

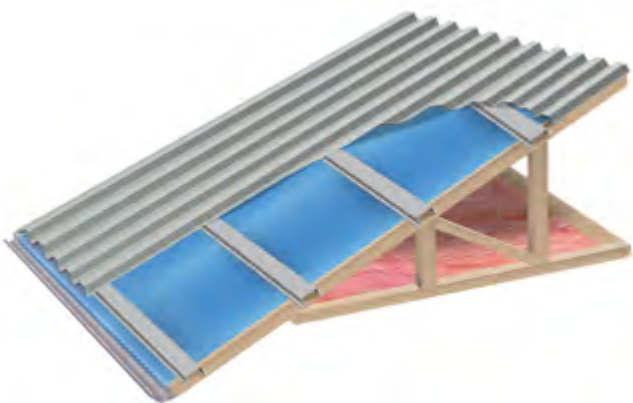
### Product information

- 10 year product warranty
- Dual purpose – may be used as a wall wrap and/or metal roof sarking
- Satisfies Bushfire Attack Level (BAL) requirements of Low-40 in roof applications and Low-FZ in wall applications (in accordance with AS 3959-2018)
- Incorporates an anti-glare coating on one side for added install safety
- Superior strength to weather and tearing
- Use with Vapastop® 883 Reinforced Foil Tape, for secure joins (refer page 34)

**Product stock and availability:** Please check stock availability with your local Fletcher Insulation representative. Product stock varies and not all products are stocked in every Fletcher Insulation location.

Width mm	Length m	m <sup>2</sup> per roll	Roll weight kg	Old product code	New product code
1350	30	40.50	4.85	352330	4006736
1350	60	81.00	9.43	352360	4006738
1500	30	45.00	5.39	352331	4006737

**Install example** Metal roof with metal battens



# Roof Sarking & Building Membranes

## Sisalation® Foam Cell Resi Liner



**Designed for** use as a reflective foil and vapour barrier for residential stud walls, double brick cavities and tile and metal roof constructions for added insulative properties.

**Made from** a closed cell, cross-linked XPE foam core encapsulated between two layers of low emissivity facing foil, one side with an anti-glare coating.

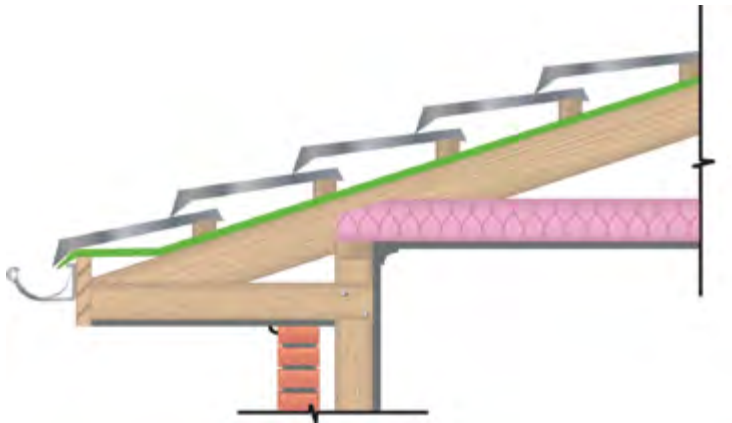
### Product information

- 10 year product warranty
- Includes a 150mm foil flap to maximise coverage and minimise taping
- Satisfies Bushfire Attack Level (BAL) requirements of Low-40 in roof applications and Low-FZ in wall applications (in accordance with AS 3959-2018)
- Advanced thermal performance reflecting up to 95% radiant heat, allowing for cooler internal conditions in hot and humid climates
- Incorporates an anti-glare coating on one side for added install safety
- Aids in the prevention of condensation
- Effective water and vapour barrier
- Maximum durability and increased tear resistance
- Allows for easy and rapid installation
- Use with Vapastop® 883 Reinforced Foil Tape, for secure joins (refer page 34)

**Product stock and availability:** Please check stock availability with your local Fletcher Insulation representative. Product stock varies and not all products are stocked in every Fletcher Insulation location.

Width mm	Overlap mm	Length m	m <sup>2</sup> per roll	Old product code	New product code
1350	150	22.25	30	395266	4006743

### System example



# Roof Sarking & Building Membranes

## Sisalation® Foam Cell Shed Liner



**Designed for** use in wall and roof applications in non-habitable sheds and garages.

**Made from** a cross linked, closed cell foam core laminated between layers of reflective foil, with an anti-glare costing on one layer for installation safety.

**Product information**

- Includes a 150mm foil overlap to maximise coverage and minimise taping
- Effective water and vapour barrier
- Reflects up to 95% of the sun's radiant heat, allowing for cooler conditions in hot and humid climates
- Incorporates an anti-glare coating on one side for added installation safety
- Assists to minimise condensation

**Product stock and availability:** Please check stock availability with your local Fletcher Insulation representative. Product stock varies and not all products are stocked in every Fletcher Insulation location.

Width mm	Overlap mm	Length m	m <sup>2</sup> per roll	Old product code	New product code
1350	150	22.25	30	395262	4006741
1350	150	33.44	45	395269	4006744

# Roof Sarking & Building Membranes

## Sisalation® Foam Cell Multipurpose



**Designed for** use as a 3-in-1 multipurpose insulation, vapour barrier and thermal break solution for steel framed residential wall and roof construction, to reduce the thermal bridging and conductivity between building elements. It is commonly also used in timber framed roof construction for added insulative properties.

Sisalation® Foam Cell Multipurpose has a Group 2 fire hazard property rating.

**Made from** a closed cell, cross-linked XPE foam core encapsulated between two layers of low emissivity reflective laminate, one side with an anti-glare coating.

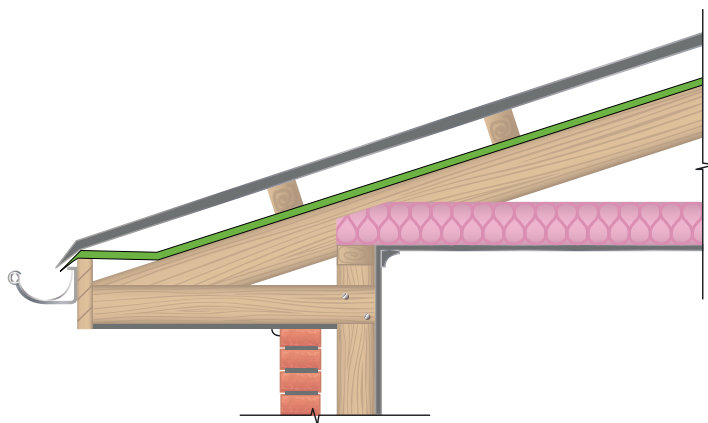
### Product information

- 10 year product warranty
- Suitable for use as a thermal break for steel framed constructions in accordance with NCC requirements
- Includes a 150mm foil flap to maximise coverage and minimise taping
- Satisfies Bushfire Attack Level (BAL) requirements of Low-40 in roof applications and Low-FZ in wall applications (in accordance with AS 3959-2018)
- Advanced thermal performance reflecting up to 95% radiant heat, allowing for cooler internal conditions in hot and humid climates
- Incorporates an anti-glare coating on one side for added installation safety
- Aids in the prevention of condensation
- Maximum durability and increased tear resistance
- Allows for easy and rapid installation
- Use with Vapastop® 883 Reinforced Foil Tape, for secure joins (refer page 34)

**Product stock and availability:** Please check stock availability with your local Fletcher Insulation representative. Product stock varies and not all products are stocked in every Fletcher Insulation location.

Material R-Value	Thickness mm	Width mm	Overlap mm	Length m	m <sup>2</sup> per roll	Old product code	New product code
R0.25	8.4	1350	150	22.25	30	395264	4006742

### System example



# Roof Sarking & Building Membranes

## Sisalation® Foam Cell Multipurpose LT



**Designed for** use as a 3-in-1 multipurpose insulation, vapour barrier and thermal break solution for steel framed residential wall and roof construction, to reduce the thermal bridging and conductivity between building elements. It is commonly also used in timber framed roof construction for added insulative properties.

Sisalation® Foam Cell Multipurpose LT can be used where a fire rated Group number is not essential.

**Made from** a closed cell, cross-linked XPE foam core encapsulated between two layers of low emissivity reflective laminate, one side with an anti-glare coating.

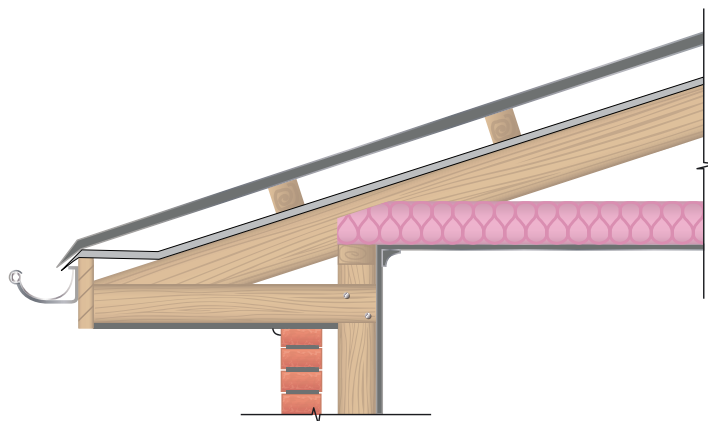
### Product information

- 10 year product warranty
- Suitable for use as a thermal break for steel framed constructions in accordance with NCC requirements
- Includes a 150mm foil flap to maximise coverage and minimise taping
- Satisfies Bushfire Attack Level (BAL) requirements of Low-40 in roof applications and Low-FZ in wall applications (in accordance with AS 3959-2018)
- Advanced thermal performance reflecting up to 95% radiant heat, allowing for cooler internal conditions in hot and humid climates
- Incorporates an anti-glare coating on one side for added installation safety
- Aids in the prevention of condensation
- Maximum durability and increased tear resistance
- Allows for easy and rapid installation
- Use with Vapastop® 883 Reinforced Foil Tape, for secure joins (refer page 34)

**Product stock and availability:** Please check stock availability with your local Fletcher Insulation representative. Product stock varies and not all products are stocked in every Fletcher Insulation location.

Material R-Value	Thickness mm	Width mm	Overlap mm	Length m	m <sup>2</sup> per roll	Old product code	New product code
R0.2	8.4	1350	150	22.25	30	395273	4006747

### System example



# Roof Sarking & Building Membranes

## Sisalation® Vapawrap® Vapour Permeable Metal Roof



**Designed for** use in residential and commercial applications in colder climate zones, with metal roof span less than or equal to 900mm unsupported or less than or equal to 1200mm with support.

Provides a secondary skin against liquid water, wind and dust penetration. The effective vapour permeance also protects the building frame by minimising the accumulation of interstitial condensation.

**Made from** a resilient non-woven fabric.

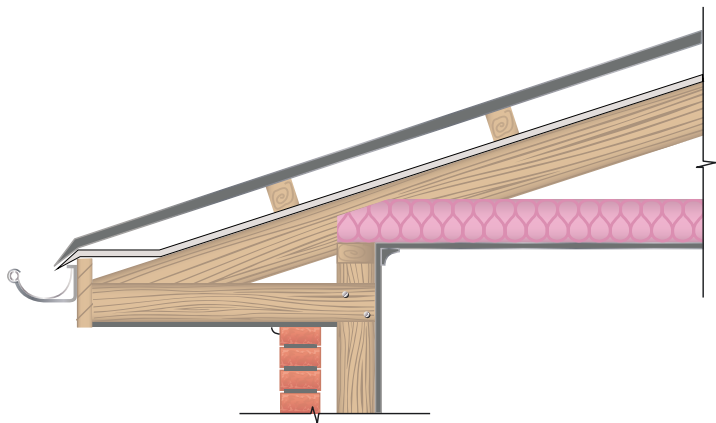
### Product information

- High vapour permeance helps water vapour escape buildings, working to reduce the chance of condensation build-up that may result in mould growth
- High tensile strength will resist damage from minor point loads or equipment during installation of roof sheeting
- Flexible, lightweight and easy to install, speeding up installation time
- Use with 3M Seaming Tape (4006809) to ensure all wall wrap joints are sealed

**Product stock and availability:** Please check stock availability with your local Fletcher Insulation representative. Product stock varies and not all products are stocked in every Fletcher Insulation location.

Width mm	Length m	m <sup>2</sup> per roll	Roll weight kg	Old product code	New product code
1350	30	40.5	4.8	256700	4006885

### System example





# Roof Sarking & Building Membranes

## Sisalation® Bubble Cell



**Designed for** use as a sarking material for residential tile and metal roof constructions as well as for stud walls and double brick cavities.

**Made from** a closed cell bubble core encapsulated between an upper and lower layer of reflective foil laminate, one side with an anti-glare coating.

### Product information

- Reflects up to 95% of the sun's radiant heat
- Aids in the prevention of condensation
- Increased tear resistance and durability
- Easy and quick to install
- Has an anti-glare coating on one side for added safety during installation
- May be used in roofs with a Bush Fire Attack level (BAL) of Low-40, in accordance with AS 3959:2018 and Low-FZ in wall applications (in accordance with AS 3959:2018)
- Use with Vapastop® 883 Reinforced Foil Tape, for secure joins (refer page 34)

**Product stock and availability:** Please check stock availability with your local Fletcher Insulation representative. Product stock varies and not all products are stocked in every Fletcher Insulation location.

Width mm	Length m	m <sup>2</sup> per roll	Nominal weight Kg	Old product code	New product code
1350	22.25	30	14	395215	4006740

### System example



# Acoustic Barriers

## Pipe Acoustic Lagging



**Designed for** use around ducts, rainwater or waste pipes to reduce noise levels. Satisfies NCC requirements for habitable areas in residential and multi-residential buildings.

**Made from** reinforced aluminium foil skin applied to a 5kg/m<sup>2</sup> flexible loaded vinyl barrier backed with 25mm thick convoluted, hydrolysis resistant, acoustic foam.

### Product information

- Maximises noise control by providing high sound absorption (reverberation control) and superior transmission loss
- Highly flexible, allowing it to conform to the smallest diameter pipes and bends
- Conforms well to corners and irregular surfaces
- Excellent fire hazard properties
- Reduces the noise in hydraulic and waste pipes by up to 25dB(A)
- Easy to cut and install into tight applications
- Safe to use with allergy sufferers due to low VOC
- Resistant to bacteria and micro-organism growth
- Use with Vapastop® 883 Reinforced Foil Tape, for secure joins (refer page 34)

**Product stock and availability:** Please check stock availability with your local Fletcher Insulation representative. Product stock varies and not all products are stocked in every Fletcher Insulation location.

Barrier weight kg/m <sup>2</sup>	Thickness mm	Width mm	Length m	m <sup>2</sup> per roll	Roll weight kg	Rolls per pallet	Old product code	New product code
5	25	1350	5	6.70	30	50	330025	4006764

**Acoustic example** Water waste pipe



# Acoustic Barriers

## Loaded Vinyl Barrier



**Designed for** use in applications where space may be limited to reduce unwanted noise transmission through ceilings, walls, floors, office partitions, machinery enclosures and/or ductwork. Can also be draped to make portable acoustic curtains and screens.

**Made from** foil faced, heavy mass-loaded vinyl noise barrier with a reinforced fabric backing.

### Product information

- Easy to cut and fabricate around pipe penetrations, ducting and cabling
- High tensile strength, resistant to tearing
- Free from lead, odour-producing oils and bitumen
- Excellent fire hazard properties
- Easy to cut, sew and mechanically fasten into position
- Safe to use with allergy sufferers due to low VOC
- Easily draped over fencing to create an acoustic barrier
- Reduces sound transfer from the external roof environment into the building (i.e. rain/overhead traffic)
- Ideal for home theatre rooms, office partitions and meeting rooms

**Product stock and availability:** Lead times will apply. Please check stock availability with your local Fletcher Insulation representative. Product stock varies and not all products are stocked in every Fletcher Insulation location.

Barrier weight kg/m <sup>2</sup>	Thickness mm	Width mm	Length m	m <sup>2</sup> per roll	Roll weight kg	Rolls per pallet	Old product code	New product code
4	2.0	1350	5	6.7	27	20	330014	4006763
6	3.0	1350	5	6.7	41	20	330006	4006761
8	4.0	1350	5	6.7	54	30	330008	4006762

# Tapes & Ancillary

## Fire Seal

**Designed for** supporting fire protection in party or separating wall constructions between adjacent tenancies (Class 1 & 10 buildings).

**Made from** mineral rockwool.

### Product information

- Non-combustible
- Should be compressed to a minimum of 15% between the top of the party wall and the roofing membrane, leaving no voids

Thickness mm	Width mm	Length mm	Pieces per pack	Old product code	New product code
13	225	750	60	338001	4006705

## Fire Strip

**Designed for** supporting fire protection in party or separating wall constructions between adjacent tenancies (Class 1 & 10 buildings).

**Made from** mineral rockwool.

### Product information

- Non-combustible
- Should be compressed to a minimum of 15% between the top of the party wall and the roofing membrane, leaving no voids

Thickness mm	Width mm	Length mm	Pieces per pack	Old product code	New product code
13	225	1000	60	338008	4006708

## Thermatape™ Thermal Break Strip



**Designed to** create a thermal break between the steel frame and the outer cladding material, as well as minimise heat leakage through metal window frames in a home when installed behind the window.

**Made from** cross-linked polyethylene and silicone coated paper with adhesive.

### Product information

- 10 year product warranty
- High quality polyethylene structure
- Self-adhesive with peel off backing
- Achieves a material R-value of R0.29
- Excellent compression resistance
- Suitable for use as a thermal break for steel framed constructions in accordance with NCC requirements
- Reduces the flow of thermal energy between conductive materials such as lightweight cladding and steel frames

Material R-Value	Thickness mm	Width mm	Length mm	Old product code	New product code
R0.29*	10	30	10	318004	4006792

\*Product R-value prior to installation. R-value will reduce under compression during installation. To ensure and meet the minimum R0.2, the product must maintain 8mm thickness or higher. **Product stock and availability:** Please check stock availability with your local Fletcher Insulation representative. Product stock varies and not all products are stocked in every Fletcher Insulation location.

# Tapes & Ancillary

## Vapastop® 883 Reinforced Foil Tape



**Designed for** use with Sisalation® products to create a vapour sealed join.

**Made from** laminated polyethylene film, polyethylene fibre mesh and aluminium foil.

- Hints**
- Ensure surface is clean and free from dust and oil residue, clean with turpentine for best results before applying.
  - When taping joins, use a plastic squeegee to assist in applying an appropriate amount of pressure along the seam of the tape.

Width mm	Length m	Rolls per carton	Old product code	New product code
48	50	24	318040	4006794
63	50	16	318080	4006798
72	50	16	318085	4006799
96	50	12	318086	4006800
120	50	8	318502	4004745
144	50	8	318501	4006806

## Plain Foil Tape



**Designed for** use with Sisalation® products to create a vapour sealed join.

**Made from** dead soft aluminium foil with synthetic rubber/resin on one side.

Width mm	Length m	Rolls per carton	Old product code	New product code
48	50	24	318400	4006802
72	50	16	318405	4006803
96	50	12	318410	4006804

## 3M Seaming Tape



**Designed for** use with vapour permeable membranes, when joining membranes to avoid moisture ingress at the seams.

**Made from** white polypropylene, with an acrylic pressure sensitive adhesive.

Width mm	Length m	Rolls per carton	Old product code	New product code
48	50	24	318838	4006809

**Product stock and availability:** Please check stock availability with your local Fletcher Insulation representative. Product stock varies and not all products are stocked in every Fletcher Insulation location.

## Notes



# Get in touch with us

**With one of Australia's widest distribution and sales coverage networks, Fletcher Insulation is ready to assist you.**



## **For more information:**

phone **1300 654 444**

email **[info@insulation.com.au](mailto:info@insulation.com.au)**

visit **[insulation.com.au](https://www.insulation.com.au)**

© Fletcher Insulation Pty Limited 2024. Fletcher Insulation reserves the right to change product specifications without prior notification. Information in this publication and otherwise supplied to users as to the subject product is based on our general experience and is given in good faith, but because of the many particular factors which are outside our knowledge and control and affect the use of products, no warranty is given or is to be implied with respect to either such information or the product itself, in particular the suitability of the product for any particular purpose. The purchaser should independently determine the suitability of the product for the intended application. The colour PINK, Pink® and Pink® Batts are registered trademarks of Owens Corning used under licence by Fletcher Insulation. FBS-1 Glasswool Bio-Soluble Insulation® is a registered trademark of ICANZ. Unless otherwise stated all ™ and ® are trademarks and registered trademarks of Fletcher Insulation Pty Limited ABN 72 001 175 355. BR029\_Revision\_15\_Issue Date 01022025.

# Fletcher Insulation

Building Better, Together



## For more information:

phone **0403 055 024**  
email **[gus@austech.com.au](mailto:gus@austech.com.au)**  
visit **[austech.com.au](http://austech.com.au)**

