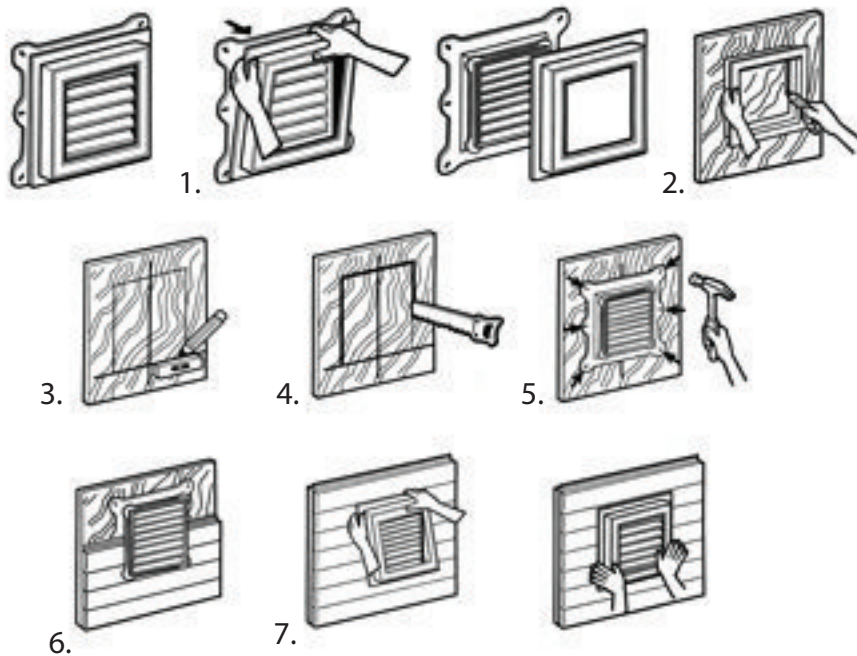


duraflo[®] INSTALLATION GUIDE

Duraflo Gable Vent & Window Installation Instructions

1. Remove the trim ring by pulling one corner first, then pull remaining corners of vent/window.
 2. Use inside of trim ring as template to make a hole for the gable vent/window.
 3. Using a level, mark the wall with horizontal and vertical lines to assure alignment. Cut out hole.
 4. Align the gable vent/window with the level line molded on flange center with the level wall markings.
 5. Nail vent/window through the molded nail holes on flange as illustrated. If using bricks go to step B6
 6. Position your siding over the flange around the gable vent/window edge.
 7. Once siding is installed, re-attach trim ring by pushing on one corner first, then firmly snapping the remaining corners.
- B6. Re-Attach trim ring by pushing on one corner first, then firmly snapping the remaining corners.
B7. Position your bricks around perimeter of gable vent/window, use no -tar sealant as necessary.



HINT: To make the trim rings release and snap on easier, flex or wrist upwards while grasping the outside of the trim ring as illustrated in step one.

Canplas Industries Ltd.
PO Box 1800, 500 Veterans Drive
Barrie, Ontario, Canada L4M 4V3
Tel. (705) 726-3361
Toll Free 1-800-461-5300
Fax: (705) 726-2186

Canplas LLC
11402 East 53rd Ave.
Suite 200, Denver, CO, U.S.A. 80239
Tel: (303) 373-1923
Toll Free: 1-800-461-5307
Fax: (303) 373-1928

www.duraflo.com

canplas[®]
an *OAliaxis* company